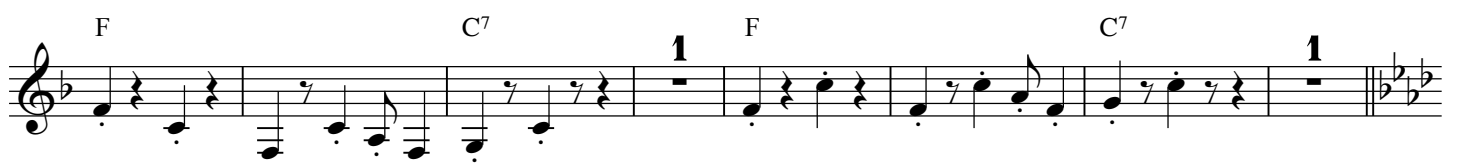
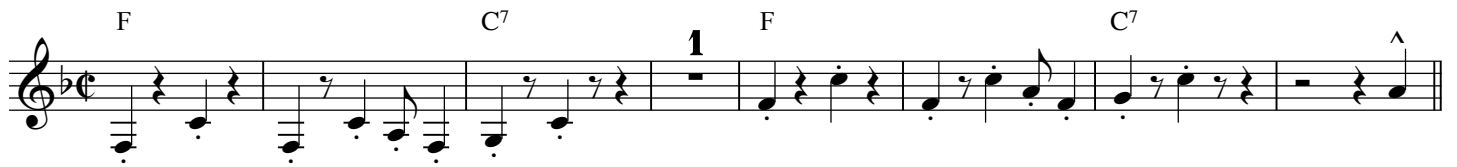


SAMBA BAHIA

Musik & Arrangement: Harald Kolasch

♩=104



C Ab Eb7 Ab Eb7

Eb7 **D** Ab Eb7

Ab Db Eb7

Eb7 Ab Eb7 **E** Ab

Ab Eb7 Bbm7

Bbm7 Eb7 Ab

F Ab7 Db6 Dbm6 Eb7

Eb7 Ab F7 Bbm7

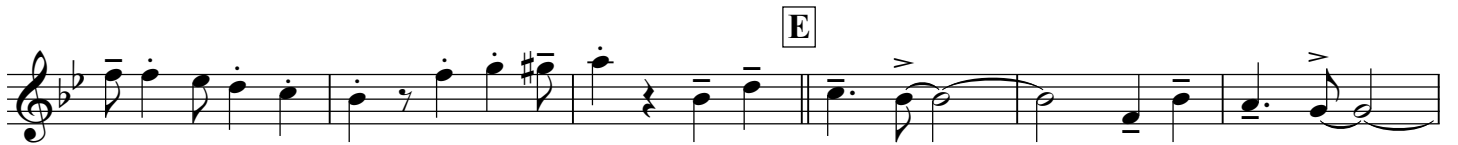
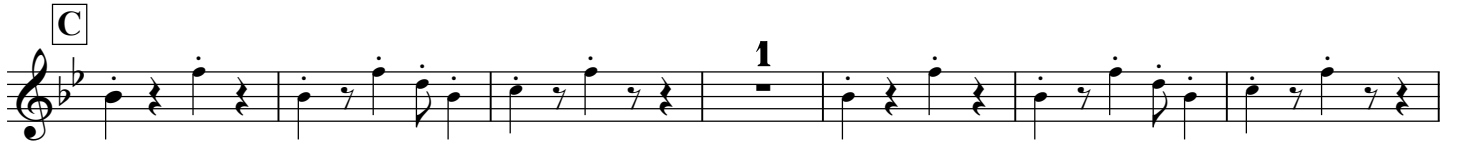
Eb7 Bbm7 Eb7 Ab

SAMBA BAHIA

Musik & Arrangement: Harald Kolasch

♩=104

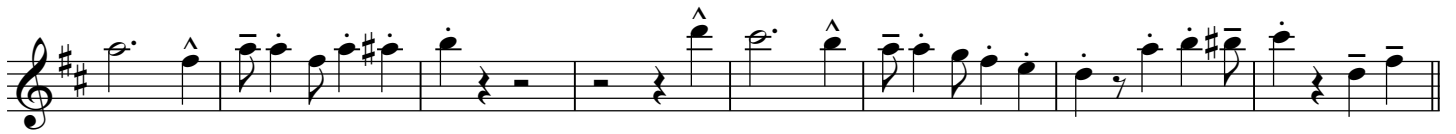




SAMBA BAHIA

Musik & Arrangement: Harald Kolasch

♩=104



C

1

Musical staff for chord C in G major, starting with a treble clef and a key signature of one flat. The staff contains a sequence of notes: G4, A4, B4, G4, F4, E4, D4, C4, G4, A4, B4, G4, F4, E4, D4, C4. A first ending bracket is placed over the final four notes (D4, C4, G4, A4).

D

Musical staff for chord D in G major, starting with a treble clef and a key signature of one flat. The staff contains notes: D4, E4, F4, G4, A4, B4, G4, F4, E4, D4, G4, A4, B4, G4, F4, E4, D4. Accents (^) are placed above the notes D4, G4, A4, and B4.

Musical staff for chord D in G major, continuing from the previous staff. The staff contains notes: D4, E4, F4, G4, A4, B4, G4, F4, E4, D4, G4, A4, B4, G4, F4, E4, D4. Accents (^) are placed above the notes D4, G4, A4, and B4.

E

Musical staff for chord E in G major, starting with a treble clef and a key signature of one flat. The staff contains notes: E4, F4, G4, A4, B4, G4, F4, E4, D4, C4, G4, A4, B4, G4, F4, E4, D4. Accents (^) are placed above the notes E4, G4, A4, and B4.

Musical staff for chord E in G major, continuing from the previous staff. The staff contains notes: E4, F4, G4, A4, B4, G4, F4, E4, D4, C4, G4, A4, B4, G4, F4, E4, D4. Accents (^) are placed above the notes E4, G4, A4, and B4.

Musical staff for chord E in G major, continuing from the previous staff. The staff contains notes: E4, F4, G4, A4, B4, G4, F4, E4, D4, C4, G4, A4, B4, G4, F4, E4, D4. Accents (^) are placed above the notes E4, G4, A4, and B4.

F

Musical staff for chord F in G major, starting with a treble clef and a key signature of one flat. The staff contains notes: F4, G4, A4, B4, G4, F4, E4, D4, C4, G4, A4, B4, G4, F4, E4, D4, C4. Accents (^) are placed above the notes F4, G4, A4, and B4.

Musical staff for chord F in G major, continuing from the previous staff. The staff contains notes: F4, G4, A4, B4, G4, F4, E4, D4, C4, G4, A4, B4, G4, F4, E4, D4, C4. Accents (^) are placed above the notes F4, G4, A4, and B4.

2

Musical staff for chord F in G major, continuing from the previous staff. The staff contains notes: F4, G4, A4, B4, G4, F4, E4, D4, C4, G4, A4, B4, G4, F4, E4, D4, C4. Accents (^) are placed above the notes F4, G4, A4, and B4.